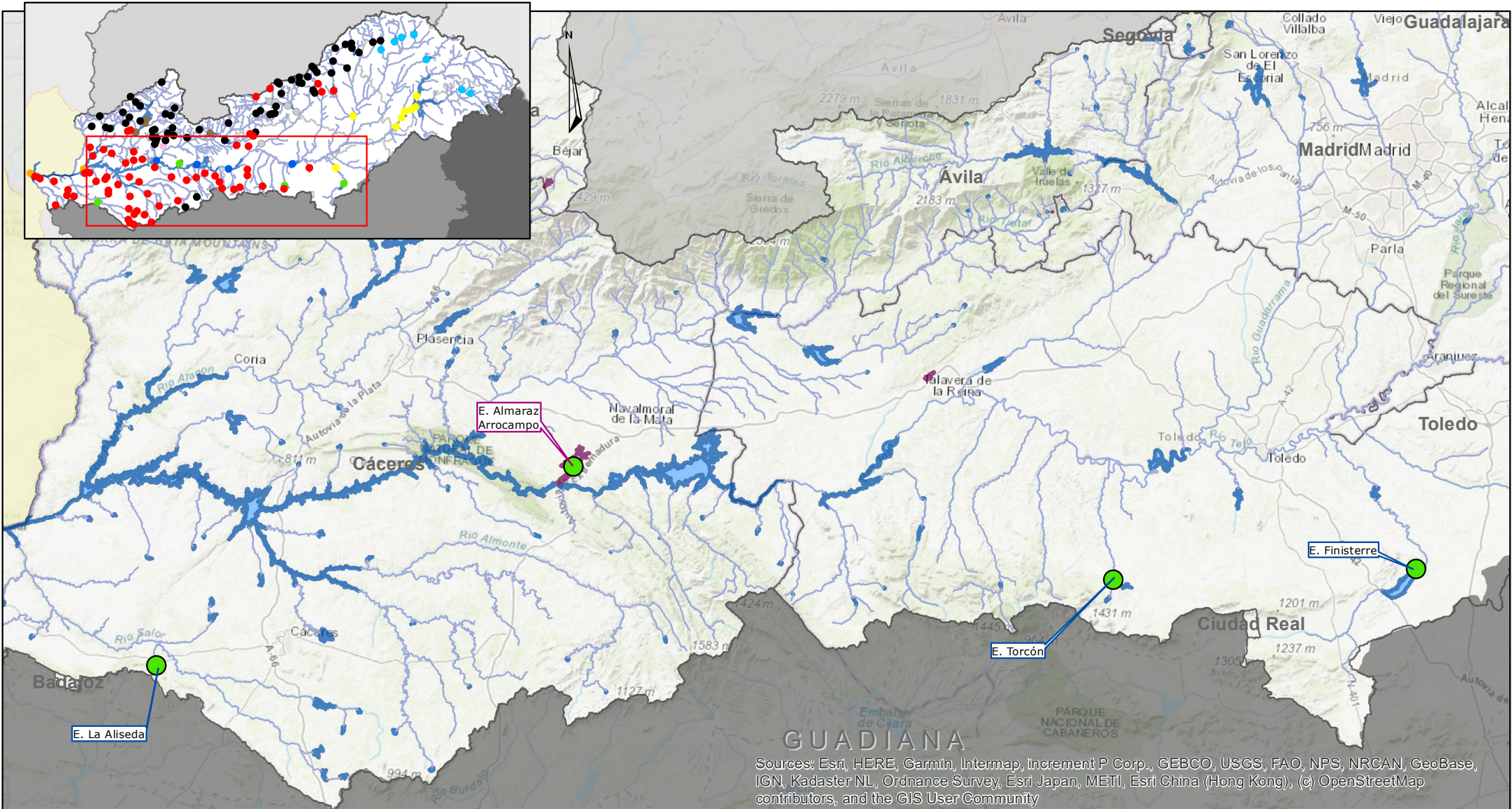






Embalses de la cuenca del Tajo



Sources: Esri, HERE, Garmin, Intermap, increment P Corp., GEBCO, USGS, FAO, NPS, NRCAN, GeoBase, IGN, Kadaster NL, Ordnance Survey, Esri Japan, METI, Esri China (Hong Kong), (c) OpenStreetMap contributors, and the GIS User Community

Tipología	E-T10: ●	Categoría	 Embalses muy modificados  Embalses artificiales	  Fecha: Enero 2022
	Monomítico, calcáreo de zonas no húmedas, pertenecientes a ríos de cabecera y tramos altos			